

Voters and VAMPIREs: The electoral geography of household exposure to rising petrol, mortgage and general price pressures

Jago Dodson and Neil Sipe, Griffith University

Figure 3. Oil and mortgage vulnerability and electoral geography in Melbourne

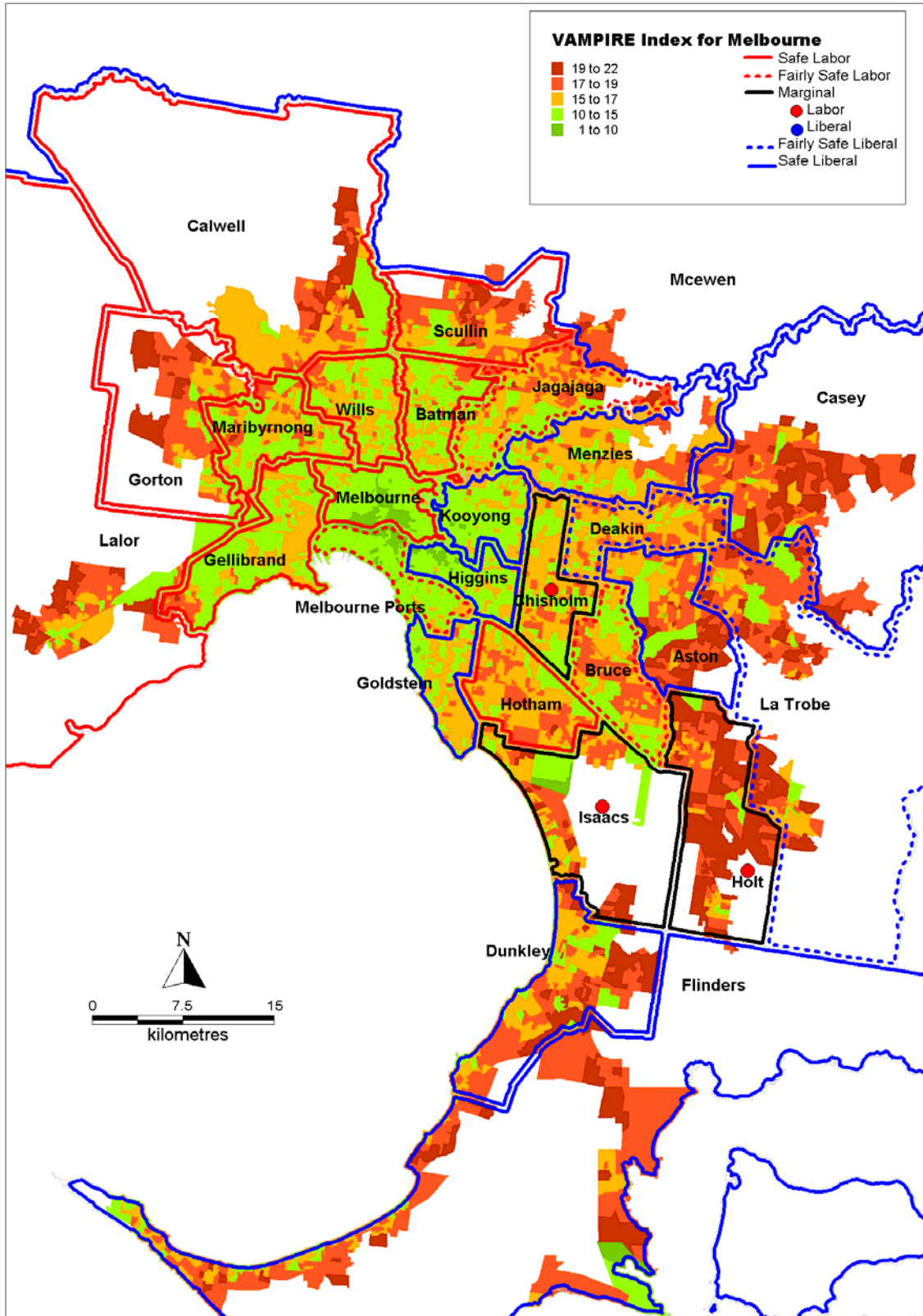


Table 3: Melbourne Electoral Divisions by party and degree of marginality

	Held by	Two Party Preferred Liberal	Preferred ALP	Margin (%)	Status
Aston	LP	63.2	36.9	26.3	Safe Liberal
Batman	ALP	28.7	71.3	42.6	Safe Labor
Bruce	ALP	46.5	53.5	7.0	Fairly Safe Labor
Calwell	ALP	41.8	58.2	16.4	Safe Labor
Casey	LP	61.4	38.7	22.7	Safe Liberal
Chisholm	ALP	47.4	52.7	5.3	Marginal Labor
Deakin	LP	55.0	45.0	9.9	Fairly Safe Liberal
Dunkley	LP	59.4	40.6	18.8	Safe Liberal
Flinders	LP	61.1	38.9	22.2	Safe Liberal
Gellibrand	ALP	35.1	65.0	29.9	Safe Labor
Goldstein	LP	60.0	40.0	20.1	Safe Liberal
Gorton	ALP	35.1	64.9	29.8	Safe Labor
Higgins	LP	58.8	41.2	17.5	Safe Liberal
Holt	ALP	48.5	51.5	3.0	Marginal Labor
Hotham	ALP	42.6	57.4	14.8	Safe Labor
Isaacs	ALP	48.5	51.5	3.0	Marginal Labor
Jagajaga	ALP	45.6	54.4	8.8	Fairly Safe Labor
Kooyong	LP	59.6	40.4	19.2	Safe Liberal
La Trobe	LP	55.8	44.2	11.7	Fairly Safe Liberal
Lalor	ALP	41.2	58.8	17.6	Safe Labor
Maribyrnong	ALP	40.5	59.5	18.9	Safe Labor
McEwen	LP	56.4	43.6	12.8	Safe Liberal
Melbourne	ALP	28.9	71.1	42.3	Safe Labor
Melbourne Ports	ALP	46.3	53.7	7.5	Fairly Safe Labor
Menzies	LP	60.7	39.3	21.3	Safe Liberal
Murray	LP	74.1	25.9	48.2	Safe Liberal
Scullin	ALP	35.2	64.8	29.6	Safe Labor

Source: Australian Electoral Commission (2005)