

Voters and VAMPIREs: The electoral geography of household exposure to rising petrol, mortgage and general price pressures

Jago Dodson and Neil Sipe, Griffith University

Figure 1. Oil and mortgage vulnerability and electoral geography in Brisbane

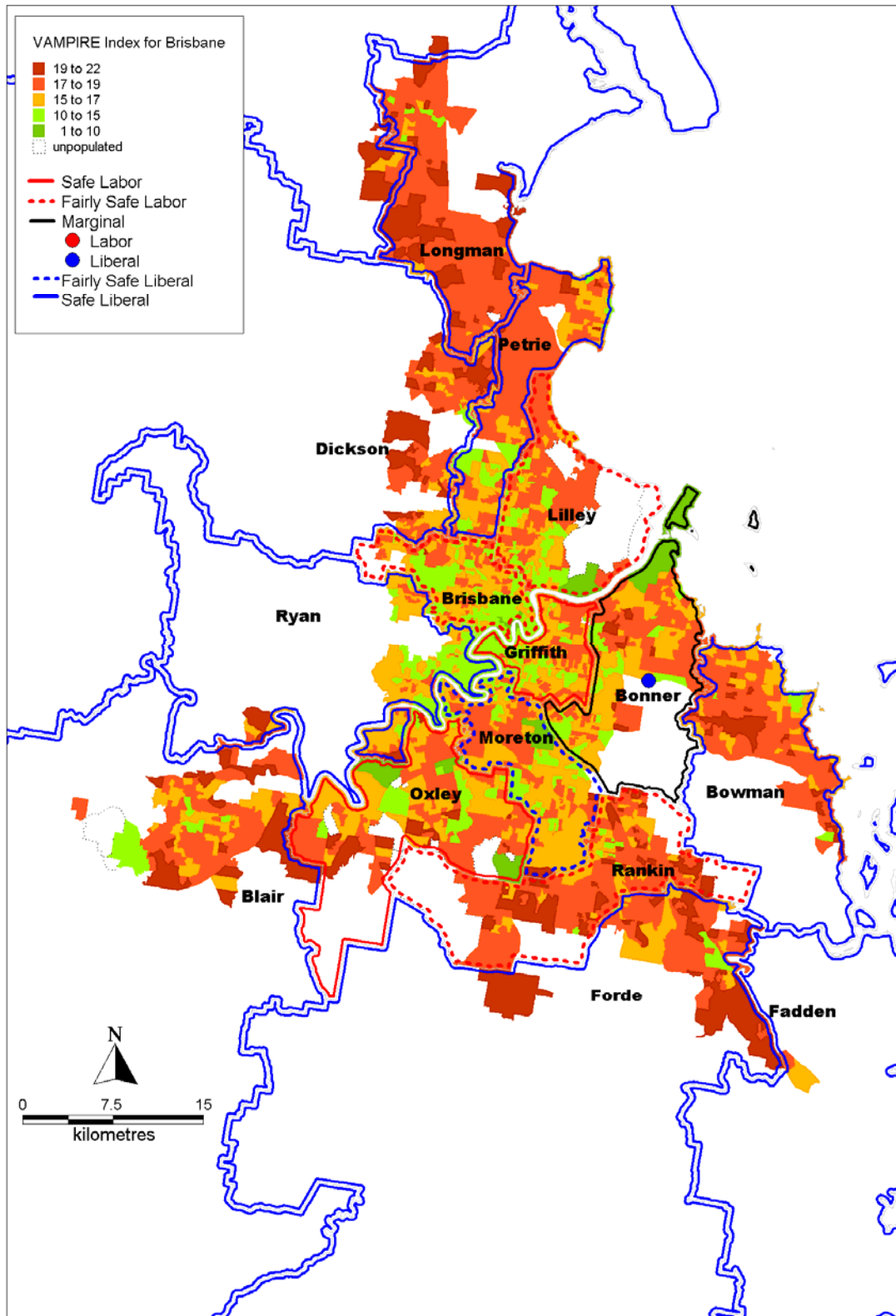


Table 1: Brisbane Electoral Divisions by party and degree of marginality

	Held by	Two Party Preferred Liberal	Preferred Labor	Margin (%)	Status
Blair	LP	61.2	38.8	22.4	Safe Liberal
Bonner	LP	50.5	49.5	1.0	Marginal Liberal
Bowman	LP	59.1	40.9	18.2	Safe Liberal
Brisbane	ALP	46.1	53.9	7.8	Fairly Safe Labor
Dickson	LP	57.8	42.2	15.7	Safe Liberal
Fadden	LP	65.3	34.7	30.6	Safe Liberal
Forde	LP	63.0	37.0	26.0	Safe Liberal
Griffith	ALP	41.4	58.6	17.3	Safe Labor
Lilley	ALP	44.7	55.3	10.5	Fairly Safe Labor
Longman	LP	57.7	42.3	15.3	Safe Liberal
Moreton	LP	54.2	45.8	8.3	Fairly Safe Liberal
Oxley	ALP	40.3	59.7	19.4	Safe Labor
Petrie	LP	57.9	42.1	15.8	Safe Liberal
Rankin	ALP	46.8	53.2	6.5	Fairly Safe Labor
Ryan	LP	60.4	39.6	20.8	Safe Liberal

Source: Australian Electoral Commission (2005)